

Walsh Bay Arts Precinct

PROJECT UPDATE – JUNE 2020

Progress continues to be made on the new Walsh Bay Arts Precinct

Construction update – Pier 2/3

- » The concrete stairs on eastern side have been demolished. Works are on track to rebuild the new stairs.
- » Structural timber rectification works have commenced and are proceeding well.
- » Installation of structural steel has commenced.

Construction update – Wharf 4/5

- » The structure of the Sydney Theatre Company's theatres is well progressed and works are now focused on getting ready for commissioning and testing. The Bar at the End of the Wharf is also progressively taking shape.

- » The Bangarra kitchen and function space are taking shape.
- » Fitting out has started in the office spaces for Sydney Dance Company.
- » Tiling and painting are commencing in both Bangarra and Sydney Dance Company spaces.
- » The structure of the Choirs' rehearsal space has been completed, with works now focused on fitting out.
- » Rectification to the wharf sub-structure has been ongoing.
- » Rectification works to the roof and western façade have commenced.

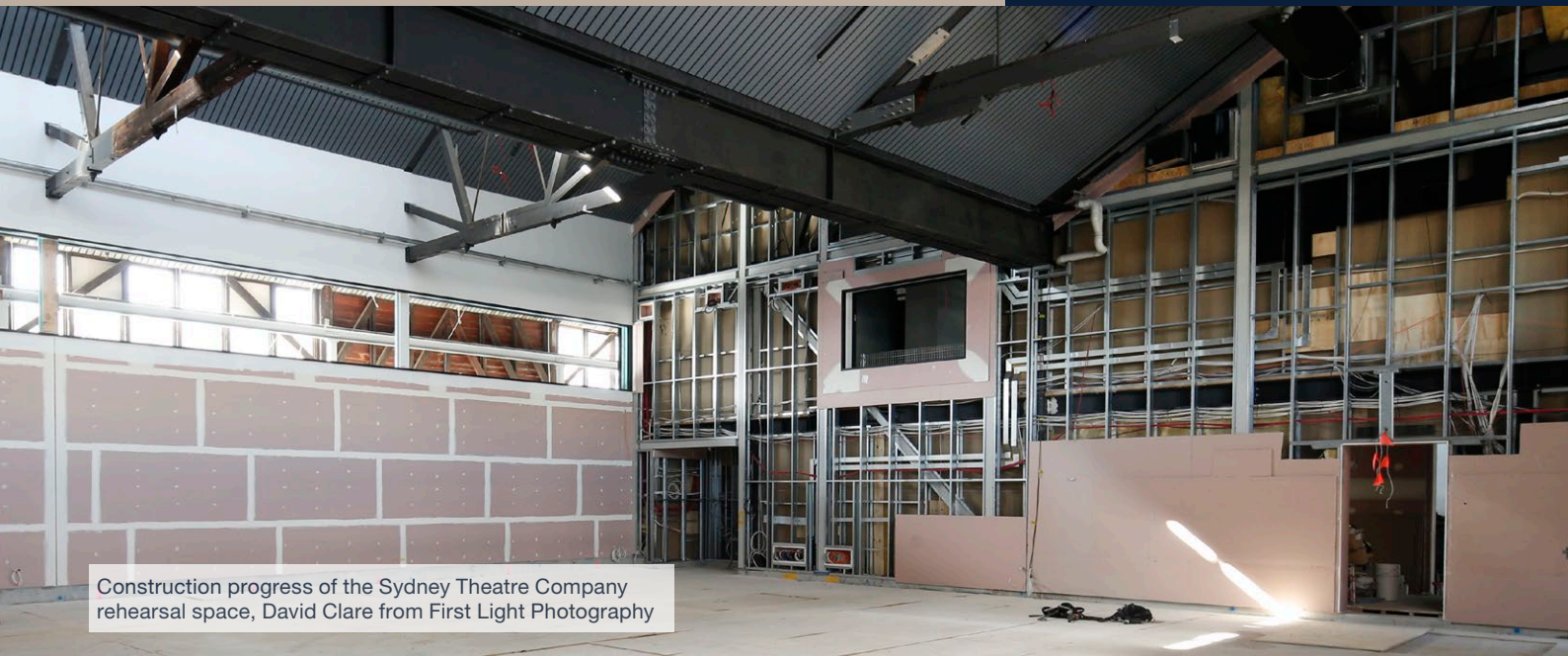
What is the Walsh Bay Arts Precinct?

The redevelopment of the Walsh Bay Arts Precinct is a priority infrastructure project for the NSW Government. The project will refurbish facilities in Wharf 4/5 and create new arts facilities and performance venues in Pier 2/3.

To learn more about the project, please visit infrastructure.nsw.gov.au/walshbay

Did you know?

There is approximately 15 kilometres of electrical cabling in Sydney Theatre Company's Theatre 1 alone!



Construction progress of the Sydney Theatre Company rehearsal space, David Clare from First Light Photography

For more information:

-  infrastructure.nsw.gov.au/walshbay
-  walshbayinfo@infrastructure.nsw.gov.au
-  1800 717 648



Upcoming work

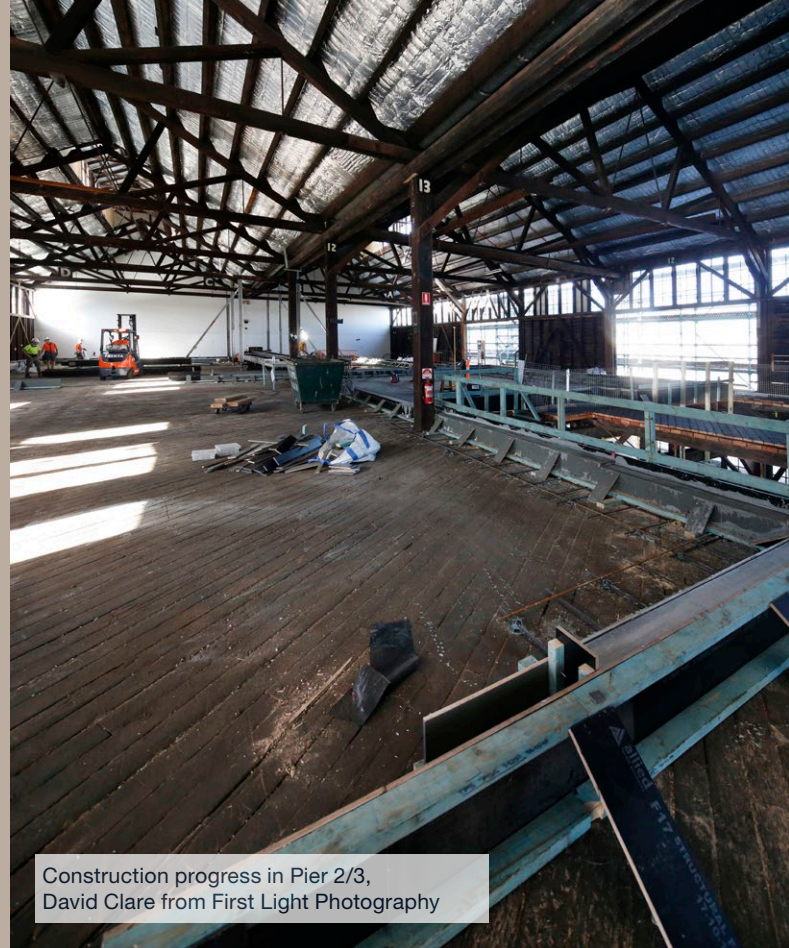
Works expected to be carried out over the next three months include:

PIER 2/3

- » Continuing to rebuild the concrete stairs on the eastern side of Pier 2/3.
- » Erecting scaffolding on the external façades.
- » Continuing the structural steel installations.
- » Commencing works to lift portions of the roof.

WHARF 4/5

- » In all areas, progressively closing up walls and partitions, and terminating cabling to get ready for testing and commissioning.
- » Continuing façade rectification works on the western side.
- » Continuing with roof rectification works before installing new solar panels.



Construction progress in Pier 2/3,
David Clare from First Light Photography



Construction progress of the Wharf 4/5 function space,
David Clare from First Light Photography

Construction Hours

As advised in April, the Walsh Bay Arts Precinct Redevelopment Project is currently complying with the Environmental Planning and Assessment (COVID-19 Development – Construction Work Days) Order 2020 which allows construction sites in NSW to operate on weekends and public holidays. As such, work hours on Saturday have been extended from 8am – 1pm, to 7am – 5pm. Works may also take place on Sundays and public holidays if required.

The current construction hours are:

**Monday to Friday: 7am – 6pm
and Saturday: 7am – 5pm.**

For more information:

 infrastructure.nsw.gov.au/walshbay

 walshbayinfo@infrastructure.nsw.gov.au

 1800 717 648

